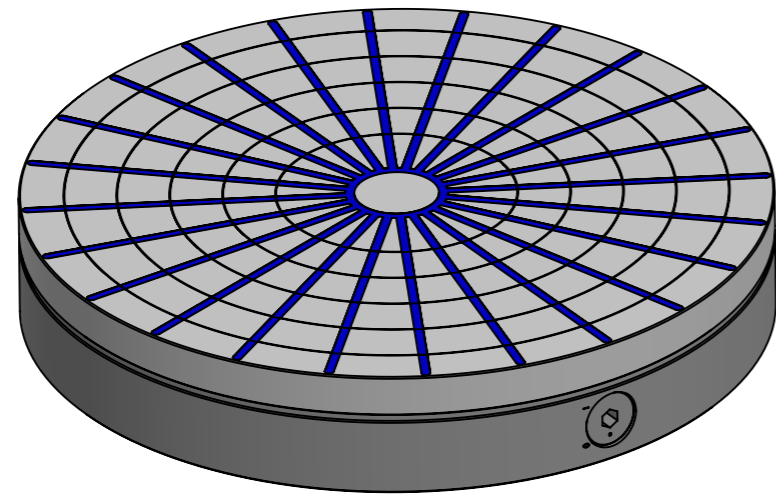
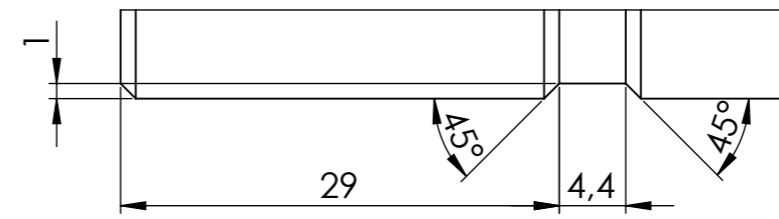
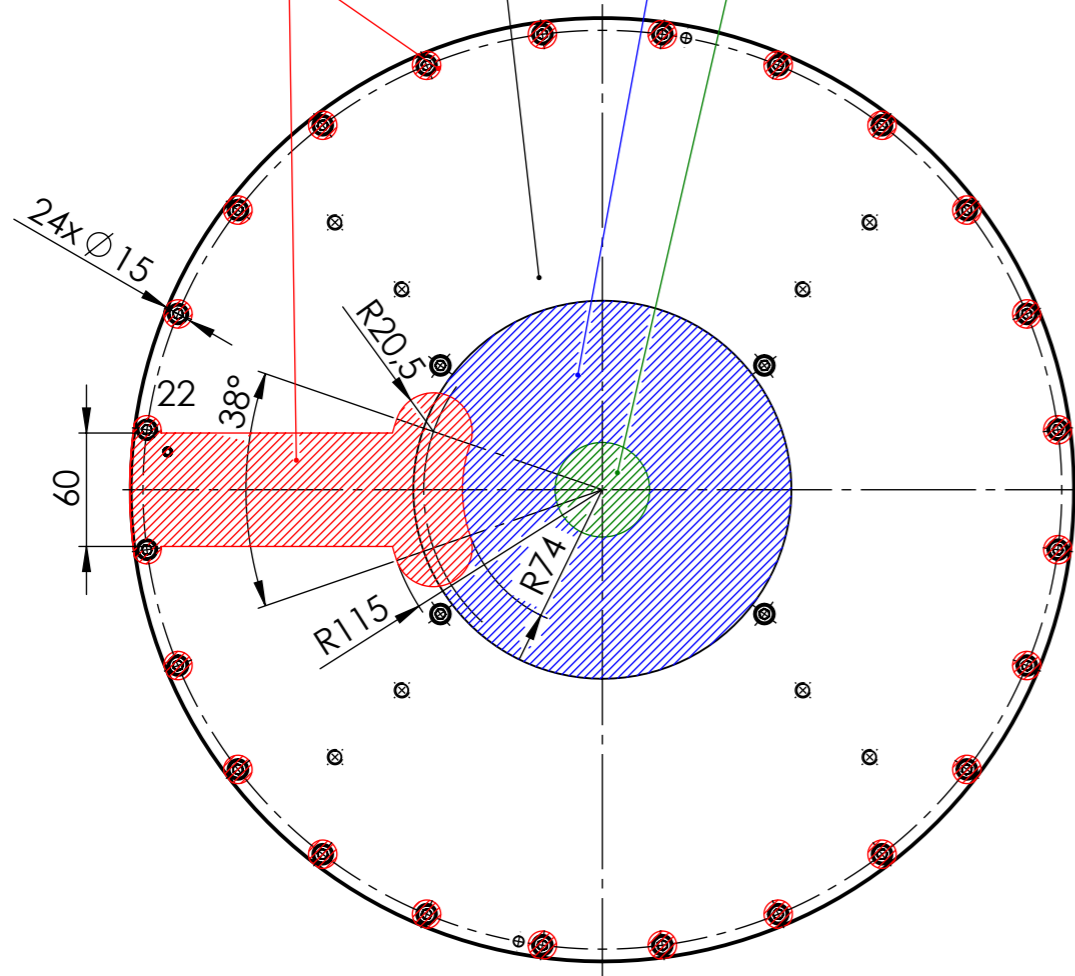


DETAIL A  
2:1

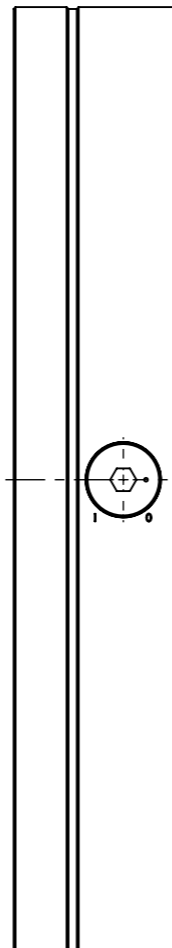
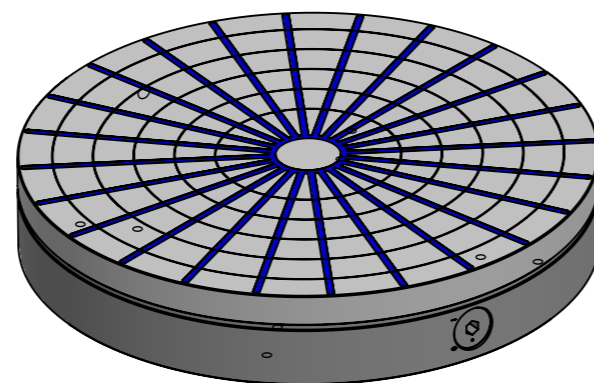
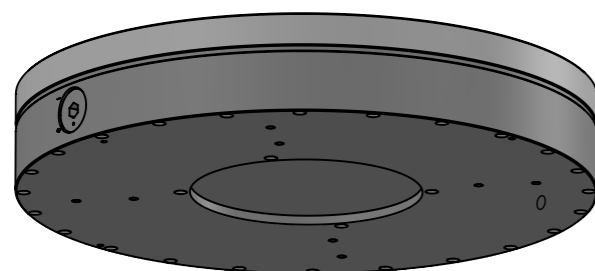
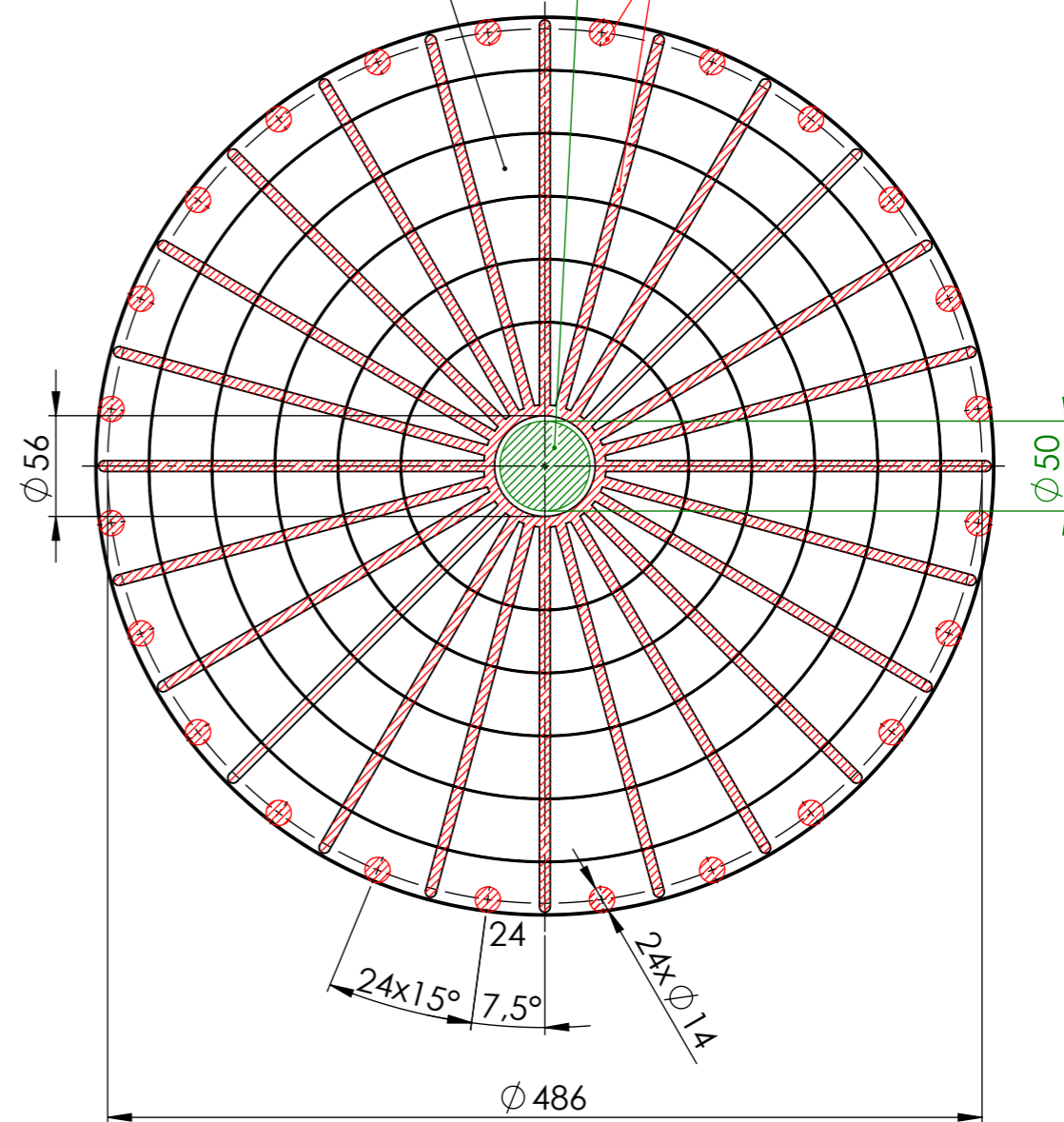


Schutzvermerk nach DIN ISO 16016 beachten! Nachdruck nur mit unserer Genehmigung!				3,2 -0,05 -0,2	tolerance	material:	weight: 120.00
All rights reserved according to DIN ISO 16016! Reprint with our permission only!					ISO 7168 M	drawing no.:	0024213
		date	name		description: <b>RS 50 Magnetrundfutter</b>		
		drawn	27.03.2024	TW			
		appr.	28.03.2024	TW			
		 <a href="http://www.flaign-te.de">www.flaign-te.de</a>			part no.:	210350	sheet 1 / 2
rev.	change				date	name	scale: 1:4

Maximum drill depth= 45mm  
 Maximum drill depth= 35mm  
 Maximum drill depth= Through  
**NO DRILL ZONES!!!**



Maximum drill depth= 20mm  
 Maximum drill depth= Through  
**NO DRILL ZONES!!!**



Schutzvermerk nach DIN ISO 16016 beachten! Nachdruck nur mit unserer Genehmigung!				$\sqrt{3,2}$ / $\begin{matrix} -0,05 \\ -0,2 \end{matrix}$	tolerance	material:	weight: 120.00
All rights reserved according to DIN ISO 16016! Reprint with our permission only!					ISO 7168 M	drawing no.: <b>0024213</b>	
				date	name	description: <b>RS 50 Magnetrundfutter</b>	
				drawn 27.03.2024	TW		
				edit 28.03.2024			
				appr. 28.03.2024	TW		
				 www.flraig-te.de		part no.:	sheet 2 / 2
						210350	A3
rev.	change	date	name	scale: 1:4		Status: Freigegeben	